



vithaus.eu

# VITHAUS



# PREFABRICATED HOUSES

DESIGN  
MANUFACTURE  
SALE





## VITHAUS company

we produce standard and individual prefabricated wooden houses and export houses to Europe

# WE ARE OFFERING PREFABRICATED WOODEN HOUSES

according to standard and individual projects

Typical modular houses are represented by lines

**KOSHAUS, CUBEHAUS, DUBLHAUS.** These series of houses consist of mobile modules with complete finishing and engineering networks, are easily transported and quickly installed on the land plot in a ready-made residential building.

Typical frame-panel houses are represented by lines

**DUPLEX, VITHAUS, IDIVIDUALHAUS.** These are houses with a large area, up to 3 floors with complex architecture. They are quickly assembled in a finished building, requiring refinement of the finish and internal engineering networks.





# STANDARD MODULAR HOUSES

consist of mobile modules  
that form a modern, living space,  
ready for living

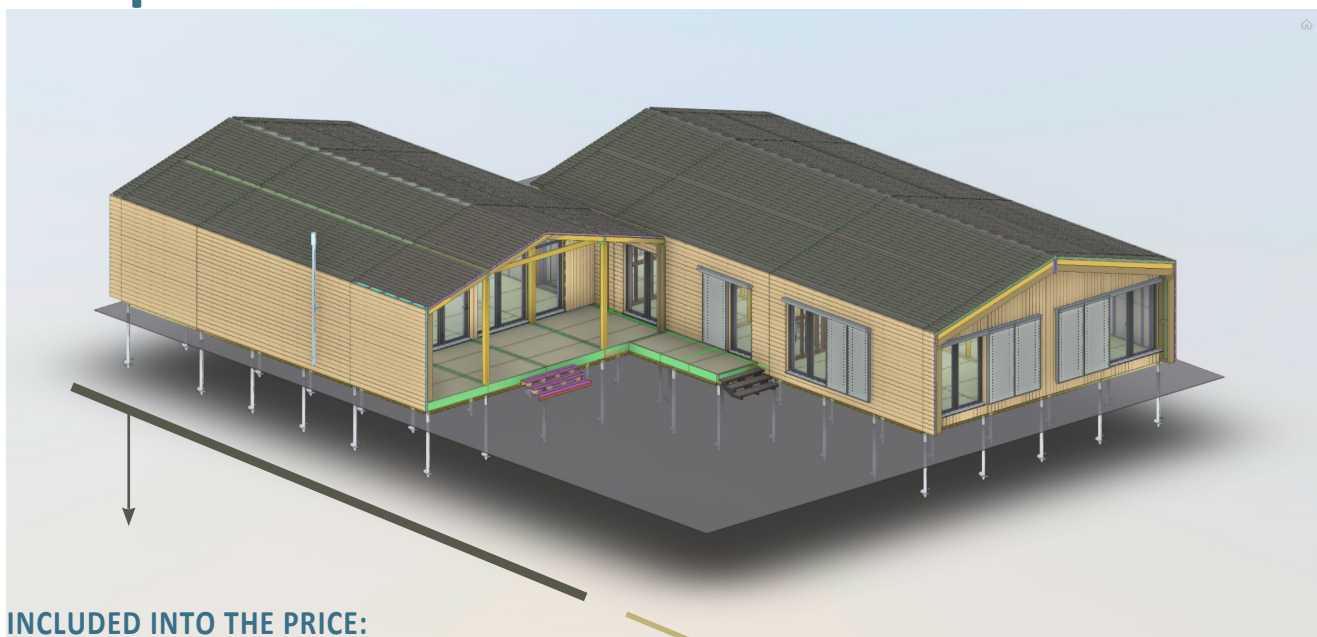
The modular houses are manufactured at the factory, providing furniture quality, full control of the entire production cycle and the last but not the least - high technology and cost reduction of the whole project. The house is transported in a finished and assembled way and then mounted on the plot of land within a few days.







## What is included into the price:



### INCLUDED INTO THE PRICE:

#### House (main modules)

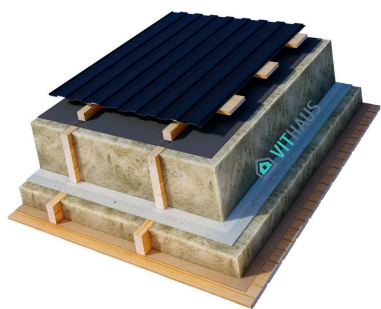
The modules of the house with a spacious living room, bedrooms, a study, a hallway, a closet, a bathroom depending on the size of the house. External dimensions, house area are based on the selected model of the house.

### ADDITIONAL OPTIONS:

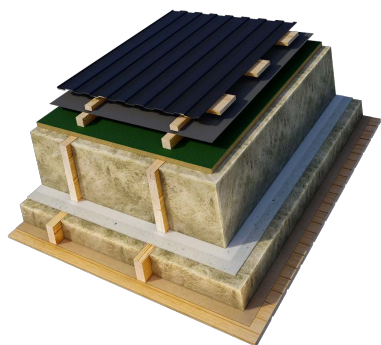
- The veranda is an addition to the house, which in summer closes it from the hot sun rays, and in winter does not interfere with the access of the sun and thus allows the house to heat up;
- Roof overhangs at the back of the house - protect the rear facade and stained glass windows from rain;
- The porch is most often installed at the main entrance to the house;
- Canopy over the porch-installed to protect the entrance group from precipitation;
- Terrace-the area and quantity depend on the customer's desire;
- Stairs can be of any size and in any quantity .



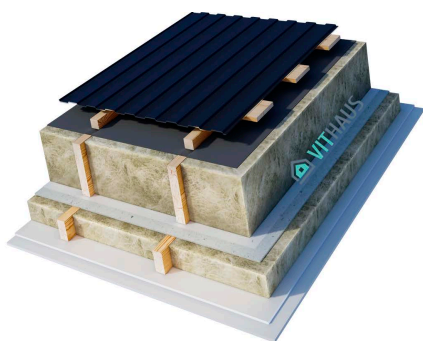
The section of the roof with the interior decoration of the ceiling with wood. Option 1. Class A:



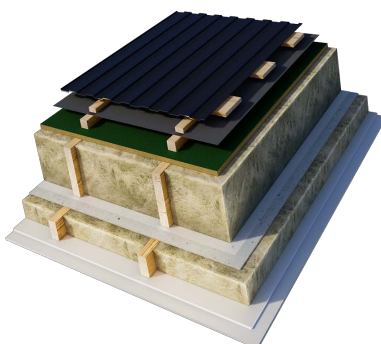
The section of the roof with the interior decoration of the ceiling with wood. Option 1. Class A+:



The section of the roof with the interior finishing of the ceiling with drywall for painting. Option 2. Class A:



The section of the roof with the interior finishing of the ceiling with drywall for painting. Option 2. Class A+:



# TECHNICAL DATA

## Energy efficiency class A

Roof: 379 mm = 6,79 m<sup>2</sup> K/W, U = 0,147  
Walls: 309 mm = 5,25 m<sup>2</sup> K/W, U = 0,190  
Floor: 294 mm = 5,08 m<sup>2</sup> K/W, U = 0,197  
Windows: wooden profile 78 mm, U = 1,00

## Energy efficiency class A+

Roof: 452 mm = 8,08 m<sup>2</sup> K/W, U = 0,124  
Walls: 309 mm = 5,25 m<sup>2</sup> K/W, U = 0,190  
Floor: 294 mm = 5,08 m<sup>2</sup> K/W, U = 0,197  
Windows: 106 mm U = 1,00

### 1. Roof construction (From outside to inside):

Roofing covering: metal profiled sheets (panels for roofs), color – graphite gray RAL 7024, matte – 20mm.  
Roof wooden crate: antiseptic planed board, pine – 20×145 mm.  
Counter-bars: antiseptic planed bar, pine – 45×45 mm.  
Condensation protection: diffusion membrane for roofing 180 g/m<sup>2</sup> – 1 mm.  
Reinforced frame: antiseptic planed bar, pine – 45×250 mm.  
Thermal insulation: stone wool 30-35 kg/m<sup>3</sup> – 250 mm.  
Internal insulation of a frame: vapour barrier film – 1 mm.  
Internal insulation of the frame: Gypsum particle board – 10 mm.  
Counter-bars: antiseptic planed bar, pine – 45×95 mm.  
Insulation: stone wool 30-35 kg/m<sup>3</sup> – 100 mm.  
Dust barrier: craft paper 80 g/m<sup>2</sup> – 1mm.  
Option 1 - Internal surfaces (ceilings): natural wooden – pine cladding, coating – SIKKENS, color – white, – 20×145 mm.  
Option 2 - Gypsum chipboard 12 mm., drywall for painting-12.5 mm.

### 1. Roof construction (From outside to inside): A+

Roofing covering: metal profiled sheets (panels for roofs), color – graphite gray RAL 7024, matte – 20mm.  
Roof wooden crate: antiseptic planed board, pine – 20×145 mm.  
Counter-bars: antiseptic planed bar, pine – 25×45 mm.  
Condensation protection: diffusion membrane for roofing 150 g/m<sup>2</sup> – 1 mm.  
Counter-bars: antiseptic planed bar, pine – 45×45 mm.  
External insulation of the frame: fiberboard Isoplaat – 25 mm.  
Reinforced wooden frame: antiseptic planed bar, pine – 45×300 mm.  
Thermal insulation: stone wool 30-35 kg/m<sup>3</sup> – 300 mm.  
Internal insulation of a frame: vapour barrier film – 1 mm.  
Internal insulation of the frame: Gypsum particle board – 10 mm.  
Counter-bars: antiseptic planed bar 45×95 mm, pine.  
Insulation: stone wool 30-35 kg/m<sup>3</sup> – 100 mm.  
Dust barrier: craft paper 80 g/m<sup>2</sup> – 1mm.  
Option 1 - Internal surfaces (ceilings): natural wooden – pine cladding, coating – SIKKENS, color – white, – 20×145 mm.  
Option 2 - Gypsum chipboard 12 mm., drywall for painting-12.5 mm.



## 2. Roof construction (From outside to inside) class A/A+

Roofing covering: metal profiled sheets (panels for roofs), color – graphite gray RAL 7024, matte – 20mm.

Roof wooden crate: antiseptic planed board, pine – 20×145 mm.

Counter-bars: antiseptic planed bar, pine – 45×45 mm.

Condensation protection: diffusion membrane for roofing 180 g/m<sup>2</sup> – 1 mm.

Reinforced frame: antiseptic planed bar, pine – 45×250 mm.

Thermal insulation: stone wool 30-35 kg/m<sup>3</sup> – 250 mm.

Internal insulation of a frame: vapour barrier film – 1 mm.

Internal insulation of the frame: Gypsum particle board – 10 mm.

Counter-bars: antiseptic planed bar, pine – 45×95 mm.

Insulation: stone wool 30-35 kg/m<sup>3</sup> – 100 mm.

Dust barrier: craft paper 80 g/m<sup>2</sup> – 1mm.

Option 1 - Internal surfaces (ceilings): natural wooden – pine cladding, coating – SIKKENS, color – white, – 20×145 mm.

Option 2 - Gypsum chipboard 12 mm., drywall for painting-12.5 mm.

## 3. Basic floor construction class A/A+

In residential areas on the floor :

– laminate EGGER (ECO) (33rd class of abrasion, HOME CLASSIC collection, oak, color – to choose) – 8 mm ;

Underlayer for laminate – 4 mm.

You can optionally choose:

– Karelia Midnight parquet board with natural oak coating – 12 mm;

– underlayer for parquet board – 4 mm.

In the bathroom:

– Kerama Marazzi mosaic, Temari collection 29.8×29.8 mm, color – matt black (20071), on a 10 mm cement particleboard with waterproofing;

– waterproof layer;

– base – cement particleboard – 10 mm.

– base – moisture resistant plywood – 21 mm.

Insulation of the frame: vapor barrier – 1 mm.

Reinforced frame: antiseptic planed bar 45×250 mm, pine – 250 mm.

Thermal insulation: Ecowool 30-35 kg/m<sup>3</sup> – 250 mm.

External insulation of the frame: cement particleboard – 10 mm.

Rough finish: planed technically dried board, larch, with bioprotective antiseptic coating – 45×145 mm. During installation, galvanized reinforced fasteners are used. Coating – SIKKENS, color – black.

Along the contour of the ventilated facade, metal protection from mice.

## 4. Windows and entrance doors:

Windows and entrance doors: wooden frames – 90/106 mm with double seal circuit. Triple-glass windows with low-e glass 4×12×4×12×6i. Factory painting – SIKKENS, color – gray graphite. Roto NT accessories. On the doors – reinforced hinges, mortise lock.

Panoramic window: reinforced triple-glass with low-e glass: triplex 4×14×4×14×6i tempered glass.

## 5. Basic construction of interior walls

Finishing:

– internal surfaces of the walls located along a slope of a roof are finished with wooden pine cladding, coating – SIKKENS, color – white, – 20×145 mm;

– internal surfaces of back walls – planken, pine, SIKKENS coating, color – gray graphite, – 20×145 mm. Internal insulation of the frame: Gypsum particle board – 10 mm.

Reinforced frame: antiseptic planed bar, pine – 45×95/145-195 mm.

Thermal insulation: rock wool 45-50 kg/m<sup>3</sup> – 100/150/200 mm.

Internal insulation of the frame: Gypsum fiberboard – 10 mm.

Finishing:

– internal surfaces of the side walls located along a slope of a roof are finished with wooden pine cladding, coating – SIKKENS, color – white, – 20×145 mm;

– internal surfaces of back walls – planken, pine, SIKKENS coating, color – gray graphite, – 20×145 mm;

In the bathroom:

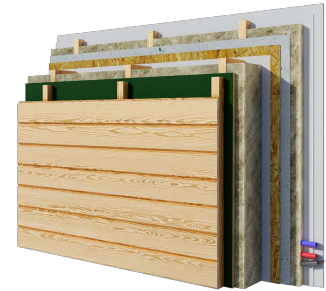
– Kerama Marazzi mosaic, Temari collection 29.8×29.8 mm, color – white (20003), on a 10 mm cement particleboard with waterproofing;

– part of the walls in the bathroom are finished with pine cladding, coating – SIKKENS, color – white, – 20×145 mm.

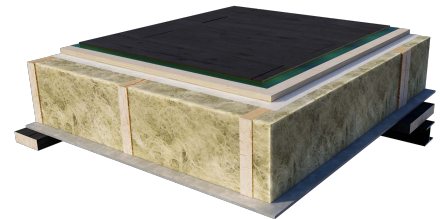
Section of the exterior walls with interior wood trim. Class A / A+:



Section of the external walls with an internal drywall finish.  
Class A / A+:

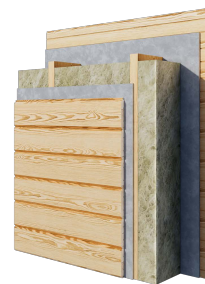


The floor section. Class A / A+



Section of interior walls:

Option 1: wood trim      Option 2: finishing with drywall for painting







## Can be expanded

Small modular house can become a temporary house while you will build the main house, and then turn into a cozy guest house, or become the main house that can be expanded and developed.

### 6. Electrics:

Electrical wiring is hidden (in the frame). The cable laying in the walls is made in metal corrugation with PVC insulation.

The wiring is made with a cable FRLS:

- lighting cable Fil Cu 3×1.5 mm;
- sockets cable Fil Cu 3×2.5 mm;
- electrical heating cable Fil Cu 3×4 mm;
- hob and oven cable Fil Cu 5×4 mm.

Socket groups are double-positioned, ceramic based.

Input circuit breaker – three-pole circuit-breaker 25A, category B.

Lighting – circuit breakers 10A, household sockets – circuit breakers 16A, on the kitchen stove, sockets in wet areas – differential circuit breakers.

### 7. Network engineering:

Sewerage: PVC pipes 50/110 mm. Connection with external networks.

Water supply: seamless polypropylene pipe Ø20 mm, combined with a flexible attaching pipe (protection against leaks). Connection with external networks.

Heated floor in the bathroom: heating mats with a thermostat Warmehaus.

Ventilation: forced in the bathroom and natural in the kitchen. Ventilation duct 100 mm. Fan riser on the roof.





## 8. Other:

**Sink tap:** Grohe, chrome.

**Wash basin in the bathroom:** Cersanit/ Villeroy&Boch Avento 60×47 furniture set with a drawer

**Toilet bowl:** Cersanit Carina/Villeroy&Bosh O.novo.

**Shower tap:** Grohe, chrome, with Grohe shower set.

**Shower room:**

– **bathroom** 700×1700 mm with a front panel;

or

– **shower area glazing:** 10 mm thick tempered glass, 1900×850 mm, transparent, colorless, in a set with metal profile for fixing to the floor and to the wall.

**Storage water heater:** Electrolux EWH 100 Royal Flash Silver.

Kitchen arrangement (for laying communications): outputs of water supply and sewerage; output for the sink; output electric cable for connecting the kitchen hob, refrigerator, kitchen hood.

## Additional expenses:

- delivery from the seller's warehouse to the building site (calculated individually);
- installation on the building site;
- crane rental 25 t for installation works;
- installation of the foundation on the site.

**Additional production is possible:**

porch, stairs, terraces, veranda.

All wood used for production of the houses goes through technical drying and has humidity of 15-18%.

The elements are covered with antiseptic bioprotectant, and on the end are covered with a special anti-cracking protective agent.





HOUSE RANGE

# KOSHAUS 26

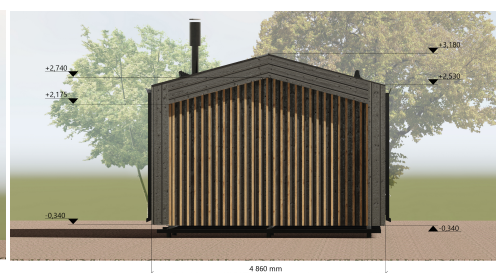
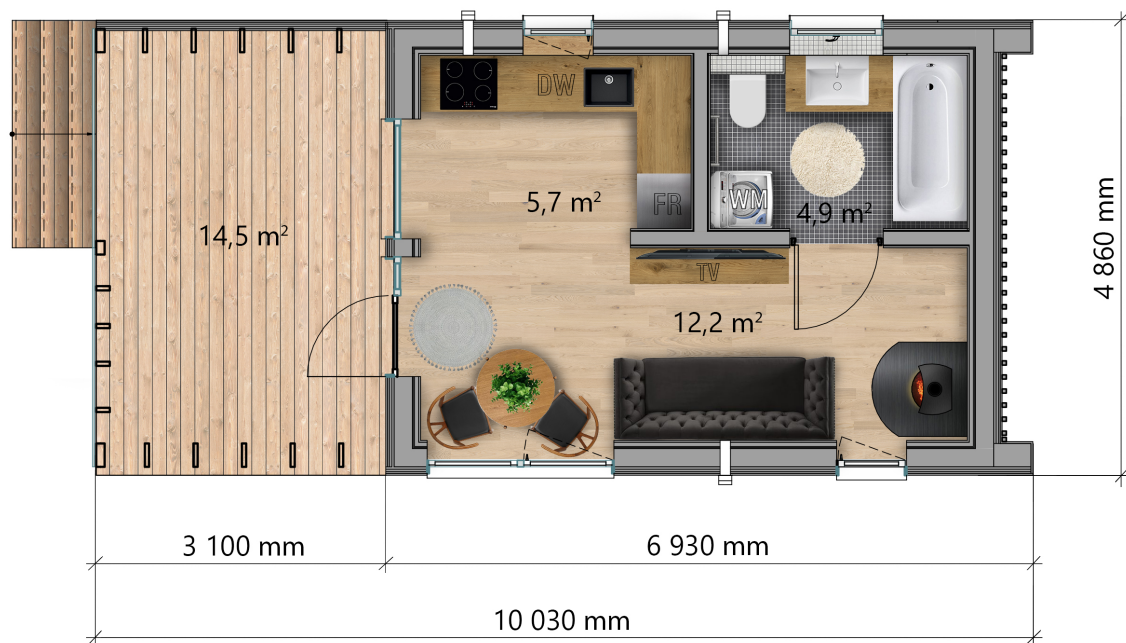
BUILT-UP AREA:	48.75 m <sup>2</sup>
HOUSE DIMENSIONS (H×W×L):	3.52×4.86×10.03 m
USEFUL AREA:	22.80 m <sup>2</sup>
VERANDA AREA:	15.07 m <sup>2</sup>
CEILING HEIGHT:	2.18-2.70 m
NUMBER OF ROOMS:	1

KOSHAUS 26 – is the smallest in the range of modular houses. Easy construction, easy to install almost anywhere.

On the useful area of the house there is a bathroom, a living room with panoramic windows, one bedroom (planning v2) and a veranda. KH26 is easily transformed into a workshop, a large studio, a mini office. In the future, it is possible to increase the area of the house at least twice, by adding central modules or installing an additional floor.











HOUSE RANGE

# KOSHAUS-53

KOSHAUS 53 has everything you need for a comfortable stay of one person of any age or a married couple without children.

The house has one bedroom, an entrance hall, a bathroom, a kitchen combined with a spacious living room, which compactly accommodates a dining area, a TV-zone, a fireplace area and a storage area. In future, the house can be easily increased in length by adding the necessary bedrooms, cabinets, sauna, additional bathrooms and rooms for other purposes. It is possible to make this model a two-storey house.

BUILT-UP AREA:	93.88 m <sup>2</sup>
HOUSE DIMENSIONS (H×W×L):	4.12×9.36×10.03 m
USEFUL AREA:	47.60 m <sup>2</sup>
VERANDA AREA:	29.02 m <sup>2</sup>
CEILING HEIGHT:	2.18-3.32 m
NUMBER OF ROOMS:	1-2











HOUSE RANGE

# KOSHAUS-78

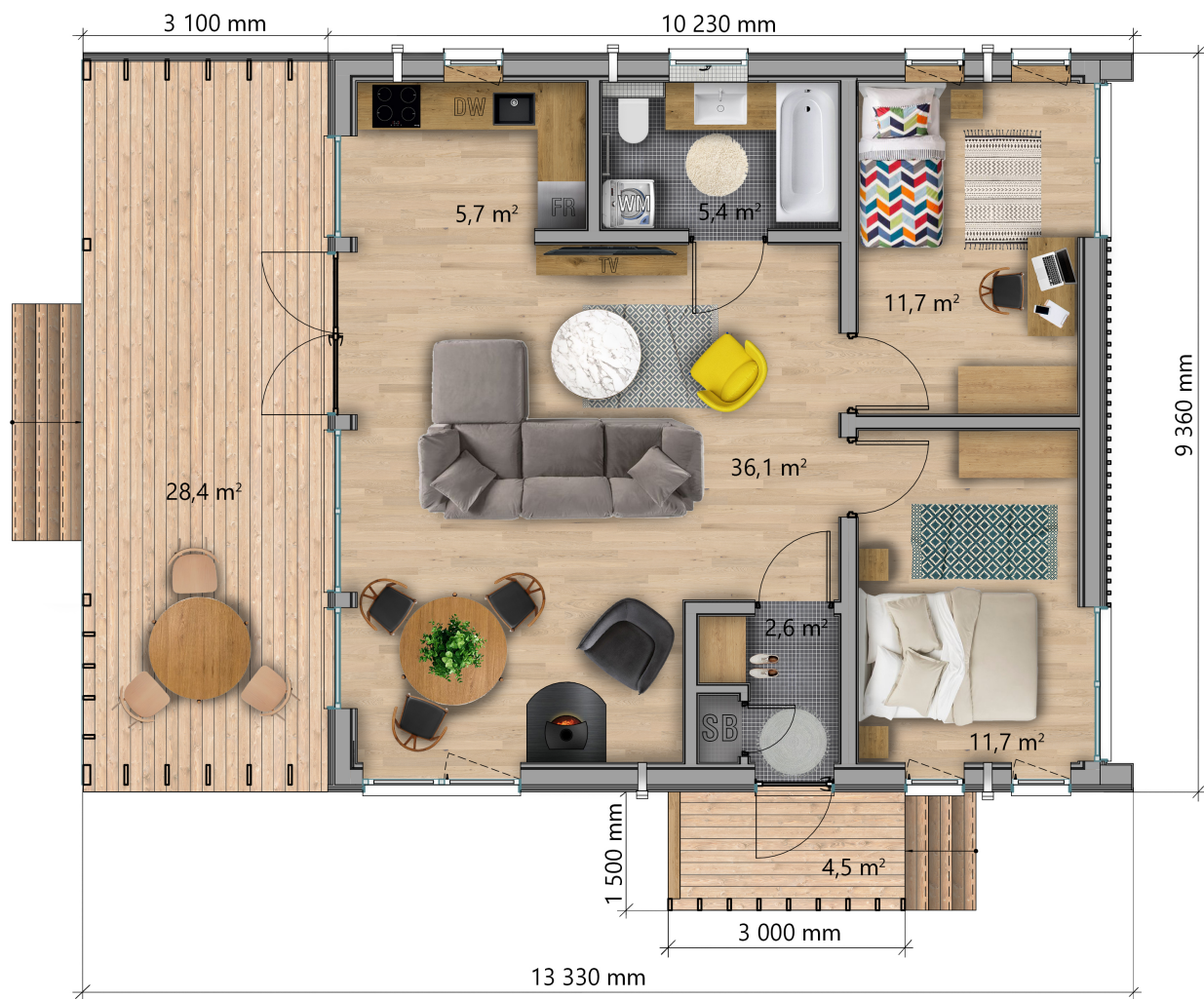
BUILT-UP AREA:	124.77 m <sup>2</sup>
HOUSE DIMENSIONS (H×W×L):	4.12×9.36×13.33 m
USEFUL AREA:	73.20 m <sup>2</sup>
VERANDA AREA:	29.02 m <sup>2</sup>
CEILING HEIGHT:	2.18-3.32 m
NUMBER OF ROOMS:	2-3

KOSHAUS 78 is designed for people who appreciate every corner of a private house.

The useful area of the house of 74 m2 compactly places everything necessary for comfortable living of a standard family of up to 4 people. 2 bedrooms, a separate entrance hall, a large bathroom, a kitchen, a bright living room with panoramic windows and a huge veranda will satisfy the needs of any family. In various versions of the layouts the hallway is provided from different sides of the house.











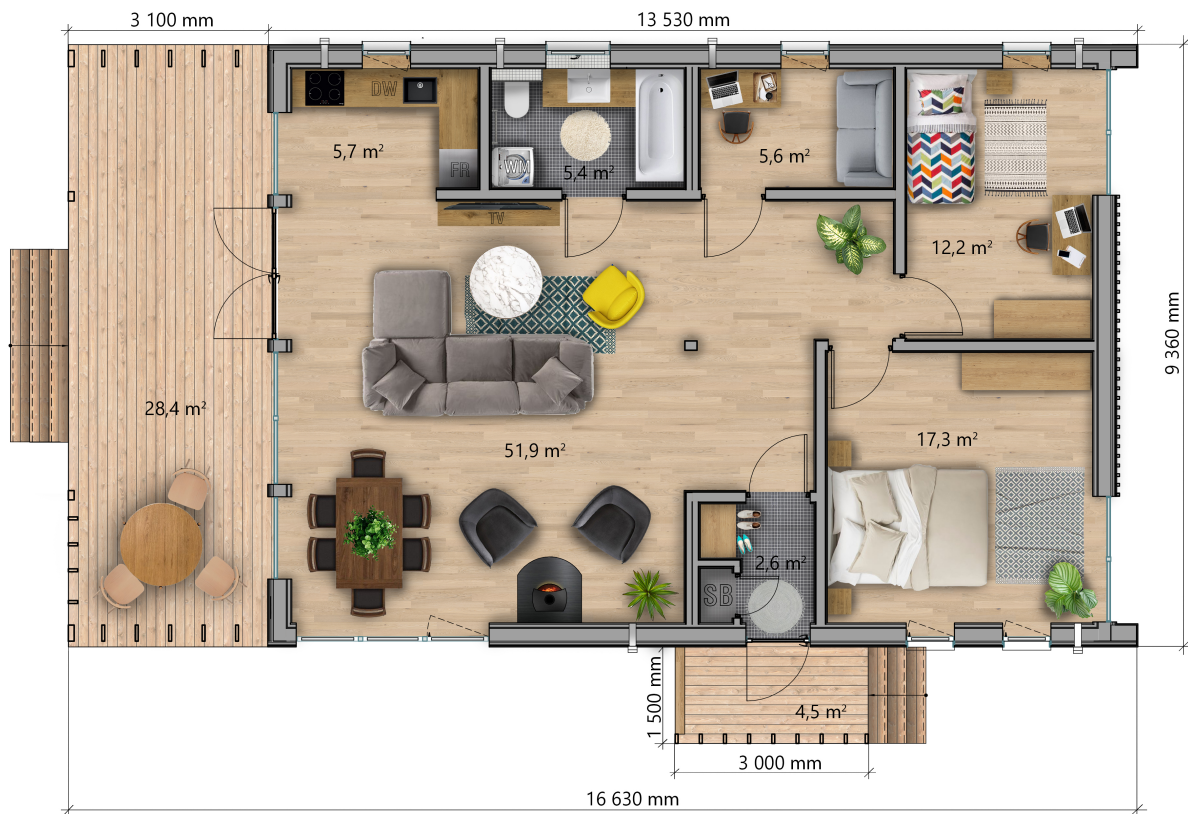
BUILT-UP AREA:	155.66 m <sup>2</sup>
HOUSE DIMENSIONS (H×W×L):	4.12×9.36×16.63 m
USEFUL AREA:	100.70 m <sup>2</sup>
VERANDA AREA:	29.02 m <sup>2</sup>
CEILING HEIGHT:	2.18-3.32 m
NUMBER OF ROOMS:	2-3

KOSHAUS 106 is a comfortable house with a spacious bedroom and a nursery.

The useful area of the house is 101.90 m<sup>2</sup>. A separate room between the bathroom and the bedroom has several possible functions: the entrance hall, when arranging the entrance from the upper part of the house, a closet, a second bathroom, a sauna, a study room, an extra bedroom, a staircase to the upper floor or any other room. A large veranda will always please the whole family and the guests, and panoramic windows will always fill the house with sunlight.











BUILT-UP AREA:	186.55 m <sup>2</sup>
HOUSE DIMENSIONS (H×W×L):	4.12×9.36×19.93 m
USEFUL AREA:	126.20 m <sup>2</sup>
VERANDA AREA:	29.02 m <sup>2</sup>
CEILING HEIGHT:	2.18-3.32 m
NUMBER OF ROOMS:	3-5

## HOUSE RANGE

# KOSHAUS-132

KOSHAUS 132 is specially designed for a big family.

The useful area of the house is 126.40 m<sup>2</sup> with a spacious veranda of 29.02 m<sup>2</sup> will accommodate not only a big family, but, if necessary, the same number of guests. 4 bedrooms, living room, kitchen, bathroom, closet, vestibule. Veranda is a place for summer rest. The area of the house allows you to place two more bathrooms, a sauna or an office. There are various options for the house layout and orientation of the main facade.











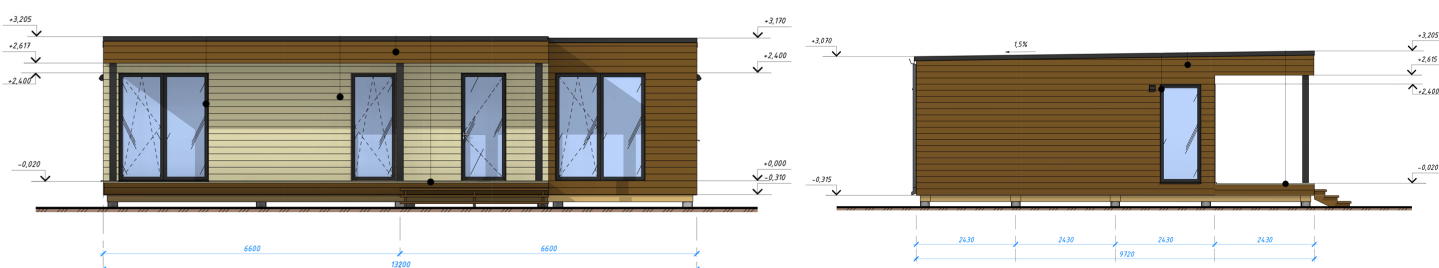
HOUSE RANGE

# CUBEHAUS 80

CUBEHAUS 80 – standard house. Suitable for full-time stay of 3-4 people.

CUBEHAUS 80 has 2 bedrooms, a living room with kitchen area, a bathroom, a closet, a vestibule, a terrace. If necessary, the house can be easily complemented upwards or sideways. Two entrances to the house allow to use the living space to the maximum.

BUILT-UP AREA:	96.23 m <sup>2</sup>
HOUSE DIMENSIONS (H×W×L):	3.7×7.29×13.2 m
USEFUL AREA:	80.15 m <sup>2</sup>
VERANDA AREA:	24 m <sup>2</sup>
CEILING HEIGHT:	2.70 m
NUMBER OF ROOMS:	2-3











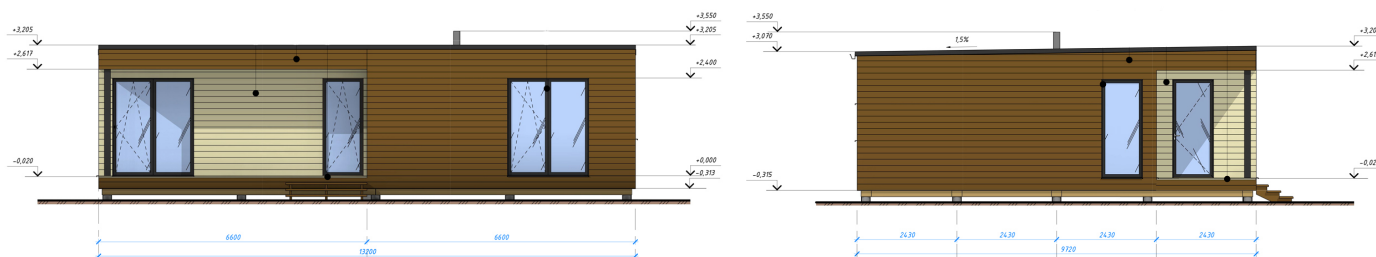
HOUSE RANGE

# CUBEHAUS 93

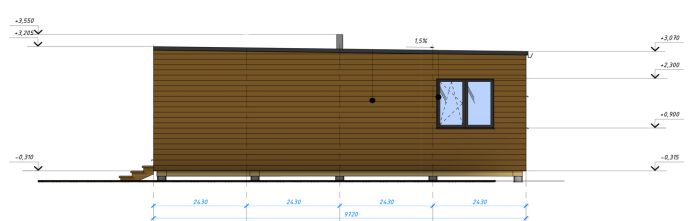
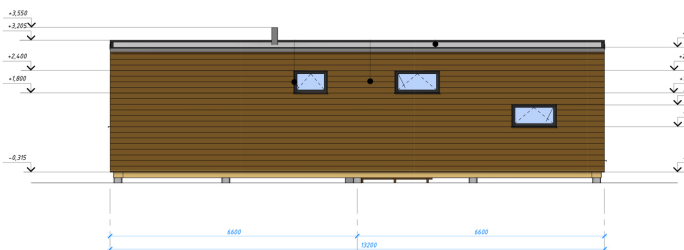
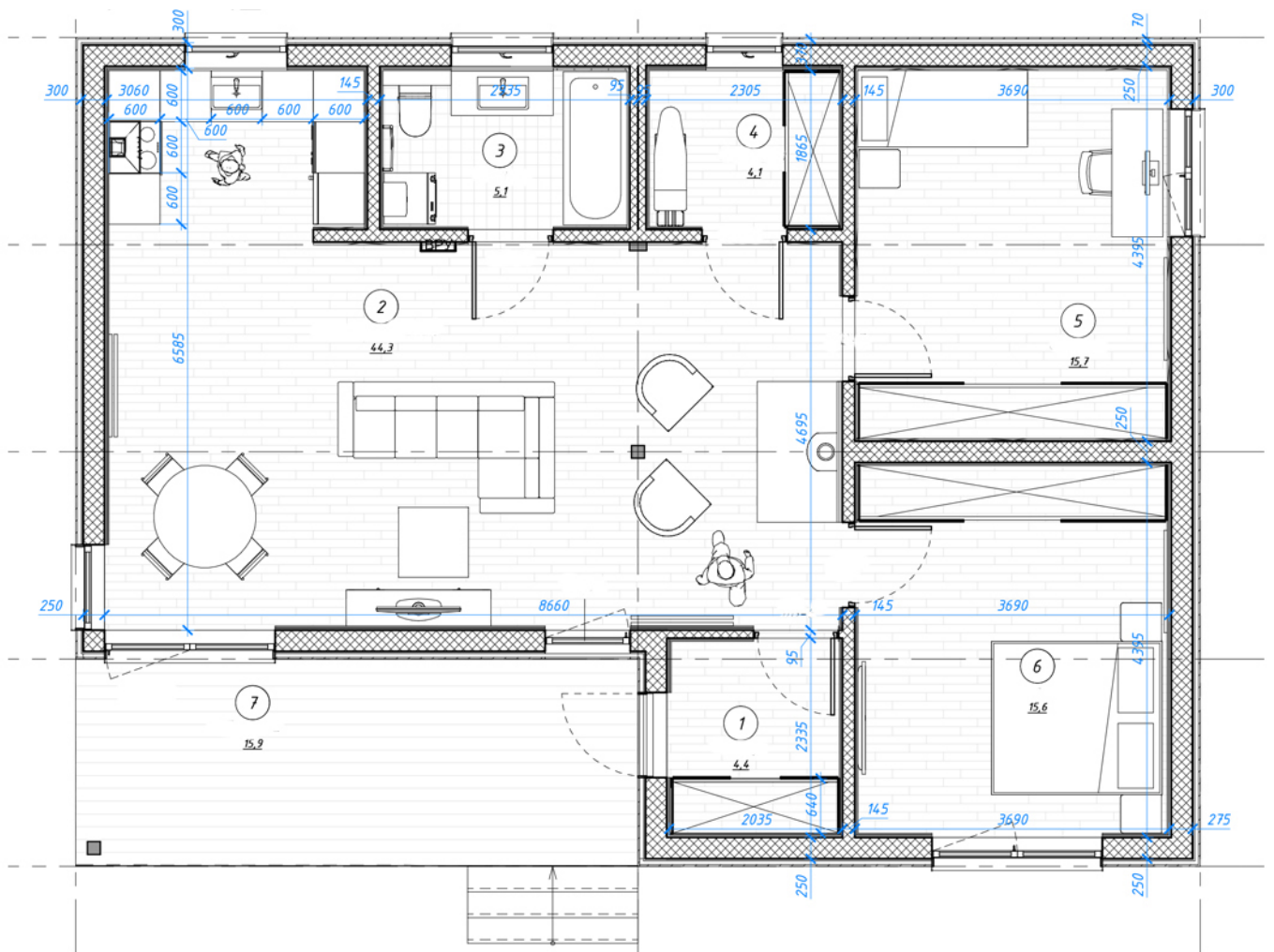
CUBEHAUS 93 – typical house.  
Suitable for permanent residence of 3-4 people.

CUBEHAUS 93 has 2 bedrooms, a kitchen-living room, a bathroom, a closet, a vestibule and a terrace. If necessary, the house can be easily complemented upwards or sideways. a closet the living space to the maximum.

BUILT-UP AREA:	128.3 m <sup>2</sup>
HOUSE DIMENSIONS (H×W×L):	3.7×9.72×13.2 m
USEFUL AREA:	92.63 m <sup>2</sup>
VERANDA AREA:	15.9 m <sup>2</sup>
CEILING HEIGHT:	2.70 m
NUMBER OF ROOMS:	2-3











## HOUSE RANGE

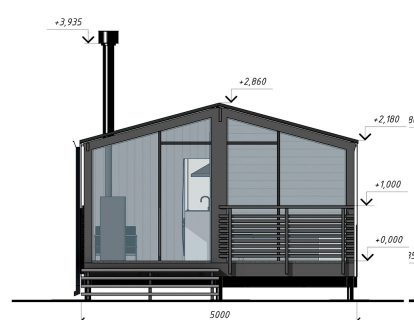
# DUBLHAUS 26

## Country house with a veranda.

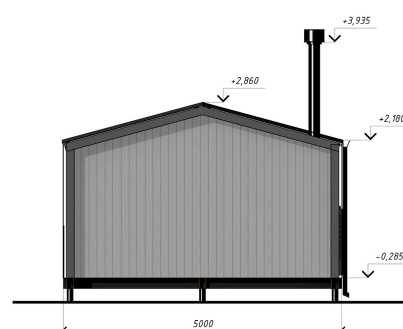
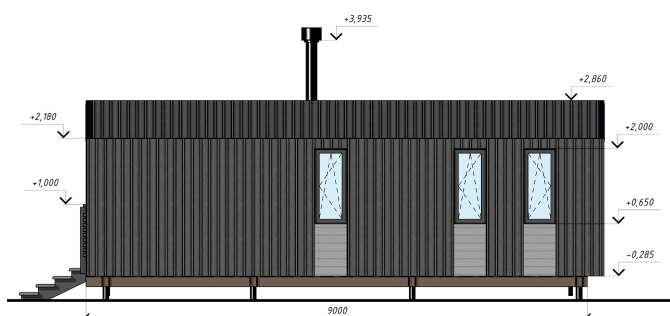
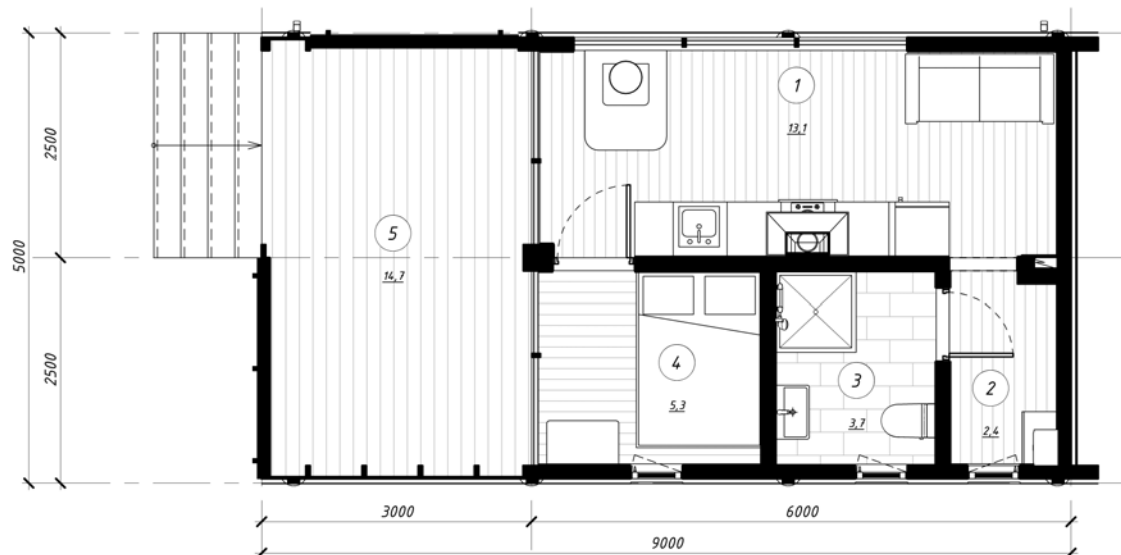
This small house has everything you need to live in. Small living room, kitchen, bedroom, bathroom with bath or shower, vestibule, summer veranda.

Dublhaus 26 can be used as a house for a family of two, a guest house, a campsite, a mini-house, a mobile home, a recreation center.

BUILT-UP AREA:	45 m <sup>2</sup>
HOUSE DIMENSIONS (H×W×D):	3.15×5×9 m
USEFUL AREA:	26 m <sup>2</sup>
VERANDA AREA:	14.7 m <sup>2</sup>
CEILING HEIGHT:	2.0-2.63 m











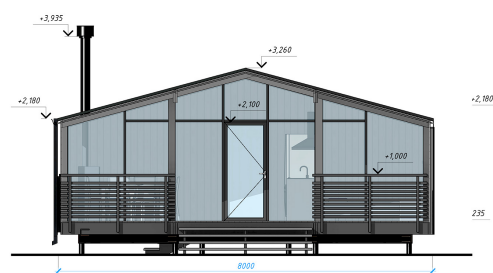
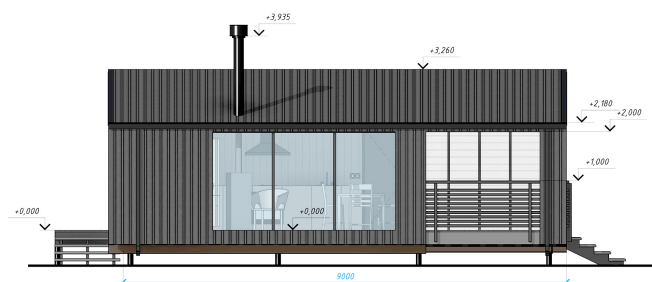
HOUSE RANGE

# DUBLHAUS 43

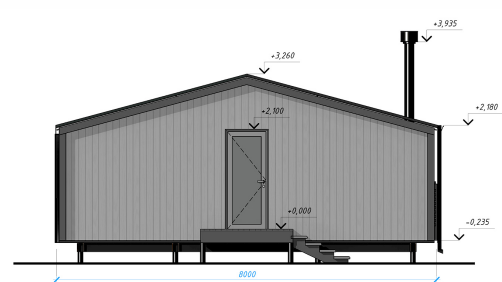
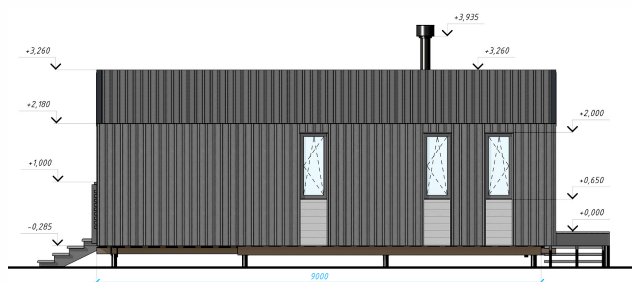
BUILT-UP AREA:	72 m <sup>2</sup>
HOUSE DIMENSIONS (H×W×D):	3.26×8×9 m
USEFUL AREA:	43 m <sup>2</sup>
VERANDA AREA:	23.6 m <sup>2</sup>
CEILING HEIGHT:	2.0-3.15 m

Country house with a veranda.

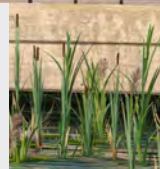
Doublehouse 43 is a three-module house with a bedroom, living room, kitchen, bathroom and veranda. The area of the house is small – only 43 m<sup>2</sup>, but for a small family it is enough to live comfortably and enjoy nature and fresh air.



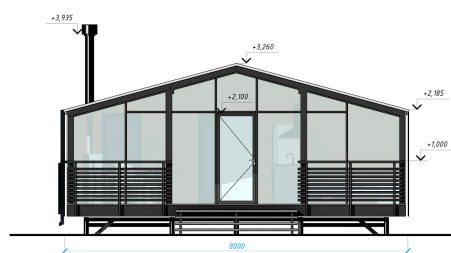




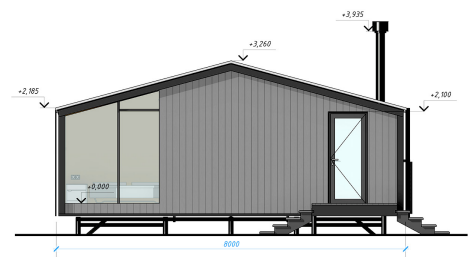
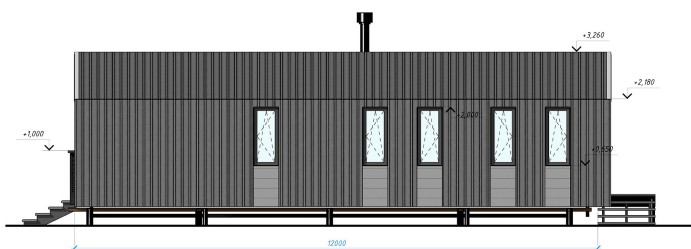




Dublhaus 65 suitable for permanent residence of a small family or a seasonal holiday of a large company. 2 bedrooms, an entrance hall, a bathroom and a spacious kitchen-studio with panoramic glazing on two sides were located on 65 m<sup>2</sup>. We recommend that Dublhaus 65 be completed with a large veranda in front and a small in rear for access to the backyard from the bedrooms. Different projects include entrances from different sides: front through the veranda, behind or on the side – through the high module.











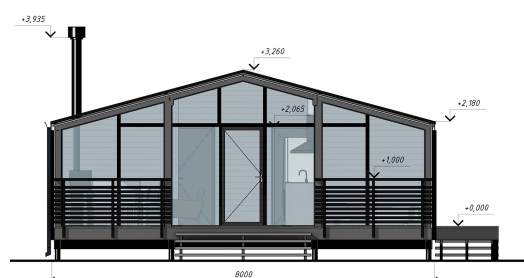
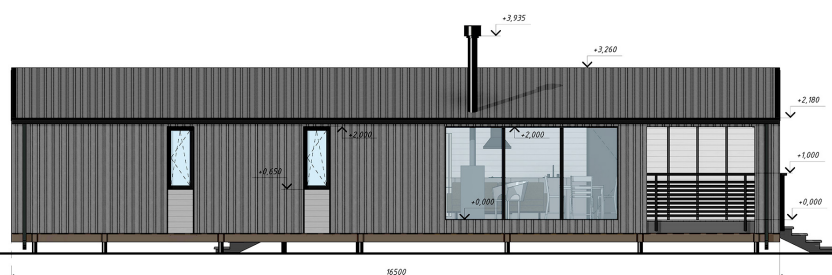
HOUSE RANGE

# DUBLHAUS 87

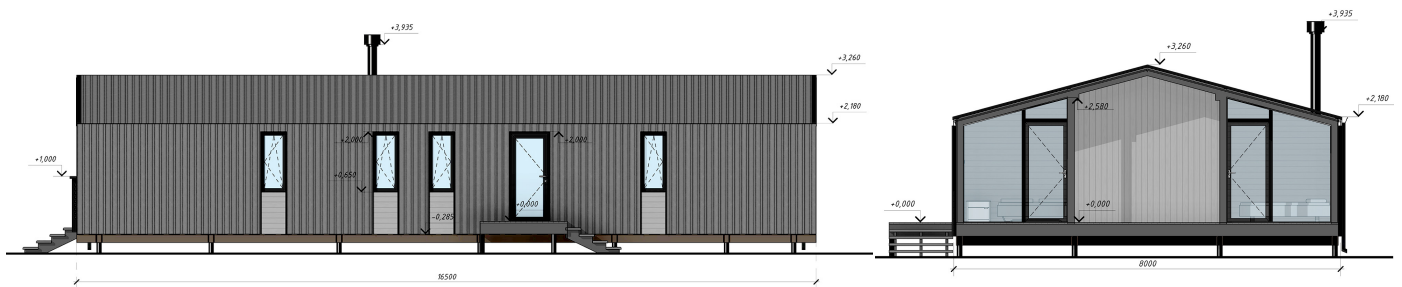
BUILT-UP AREA:	120 m <sup>2</sup>
HOUSE DIMENSIONS (H×W×D):	3.26×8×15 m
USEFUL AREA:	87 m <sup>2</sup>
VERANDA AREA:	23.6 m <sup>2</sup>
CEILING HEIGHT:	2.0-3.15 m

Typical modular house.

Dublhaus 87 is designed for people who appreciate every corner of a private house. The useful area of the house of 87 m<sup>2</sup> compactly places everything necessary for comfortable living of a standard family of up to 4 people. 2 bedrooms, a separate entrance hall, a large bathroom, a kitchen, a bright living room with stained glass and a huge veranda will satisfy the needs of any family. In various versions of the layouts the hallway is provided from different sides of the house.











HOUSE RANGE

# DUBLHAUS 110

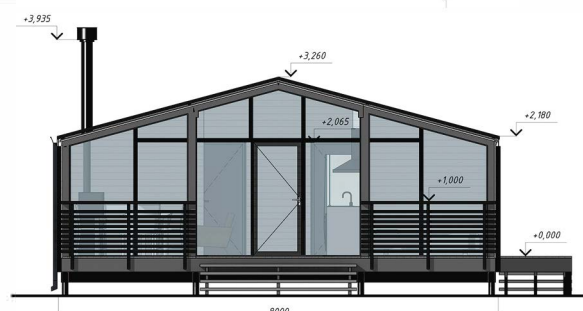
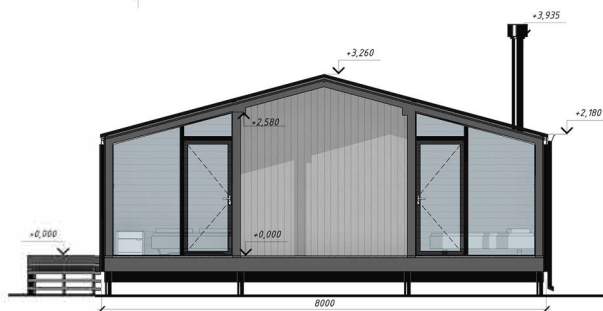
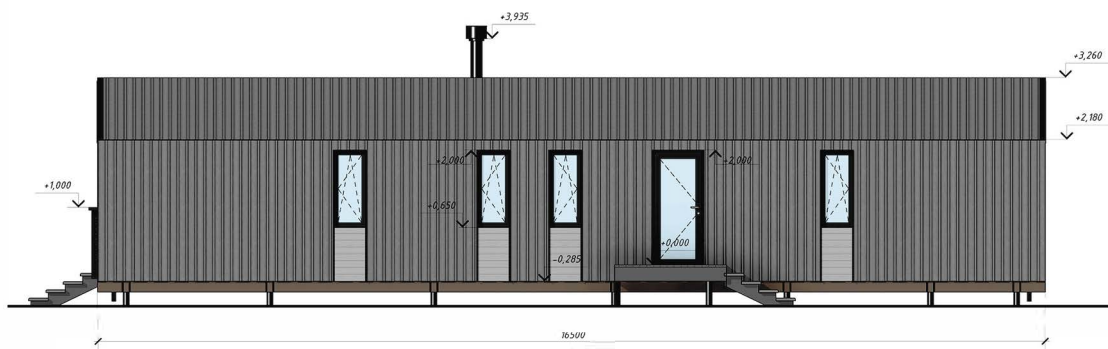
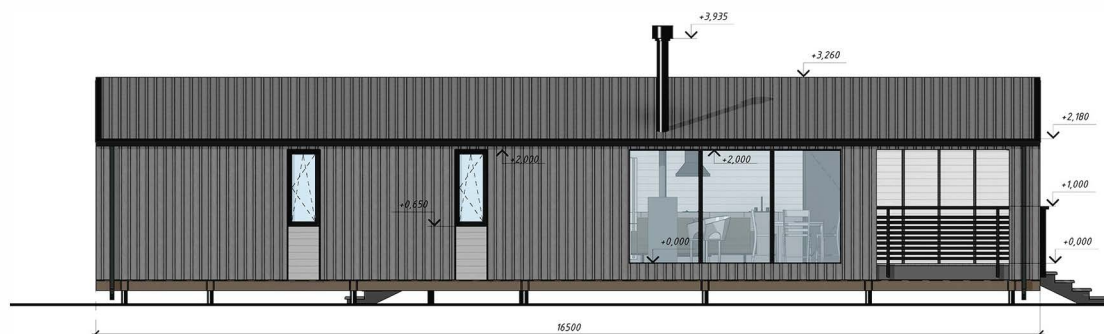
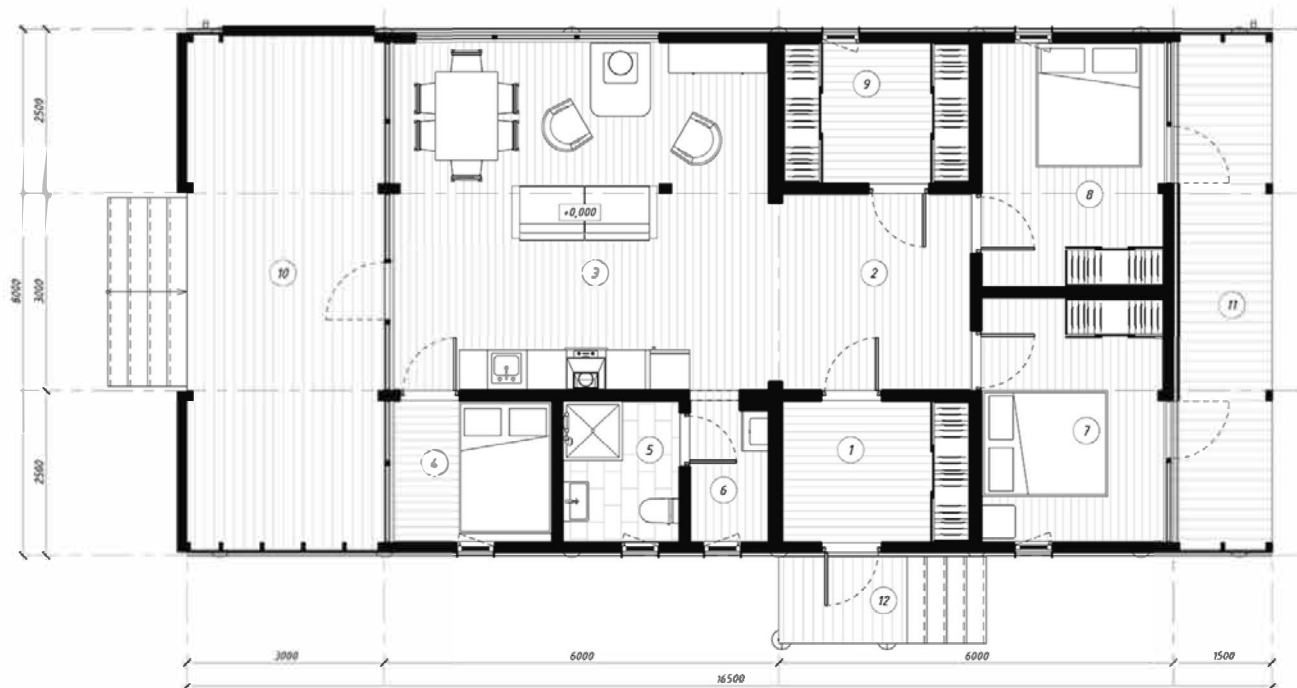
Typical modular house.

The useful area of the house is 110 m<sup>2</sup> with a veranda of 24 m<sup>2</sup> will accommodate not only a big family, but, if necessary, the same number of guests. 3 bedrooms, living room, kitchen, bathroom, vestibule. Veranda – a place for summer rest.

BUILT-UP AREA:	144 m <sup>2</sup>
HOUSE DIMENSIONS (H×W×D):	3.26×8×18 m
USEFUL AREA:	110 m <sup>2</sup>
VERANDA AREA:	23.6 m <sup>2</sup>
CEILING HEIGHT:	2.0-3.15 m











## HOUSE RANGE

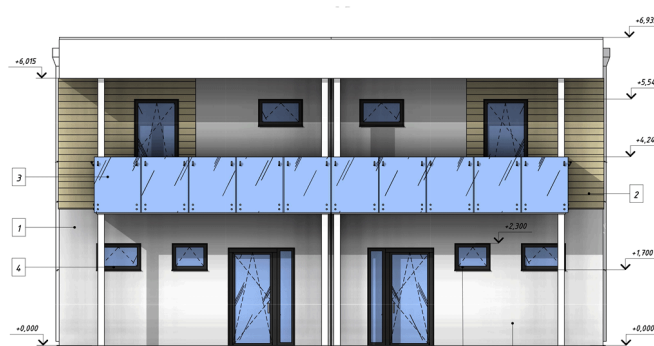
# DUPLEX 1

BUILDING AREA:	120.1 m <sup>2</sup>
USEFUL AREA apart. 1 / apart. 2:	101.2 / 101.2 m <sup>2</sup>
DIMENSIONS (HxWxL):	7x12x10.1 m
CEILING HEIGHT:	2.7-2.8 m
VERANDA/PORCHES AREA apart. 1 / apart. 2 :	27.5 m <sup>2</sup> / 27.6 m <sup>2</sup>
ROOMS apart. 1 / apart. 2:	4 / 4

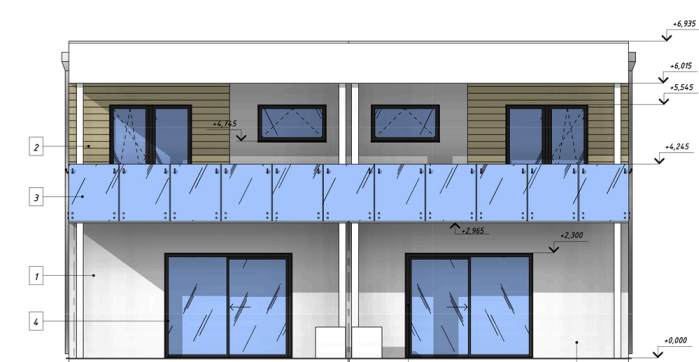
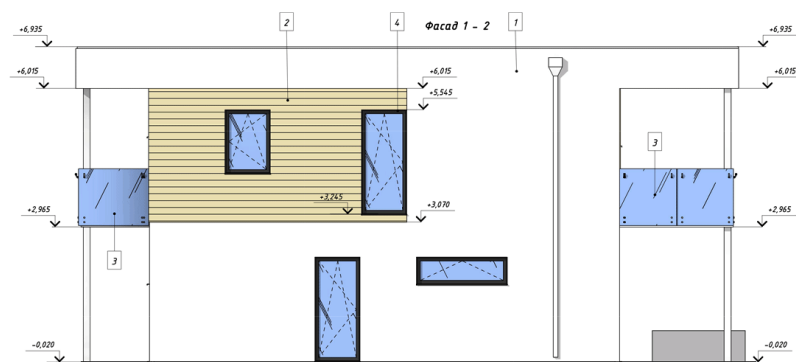
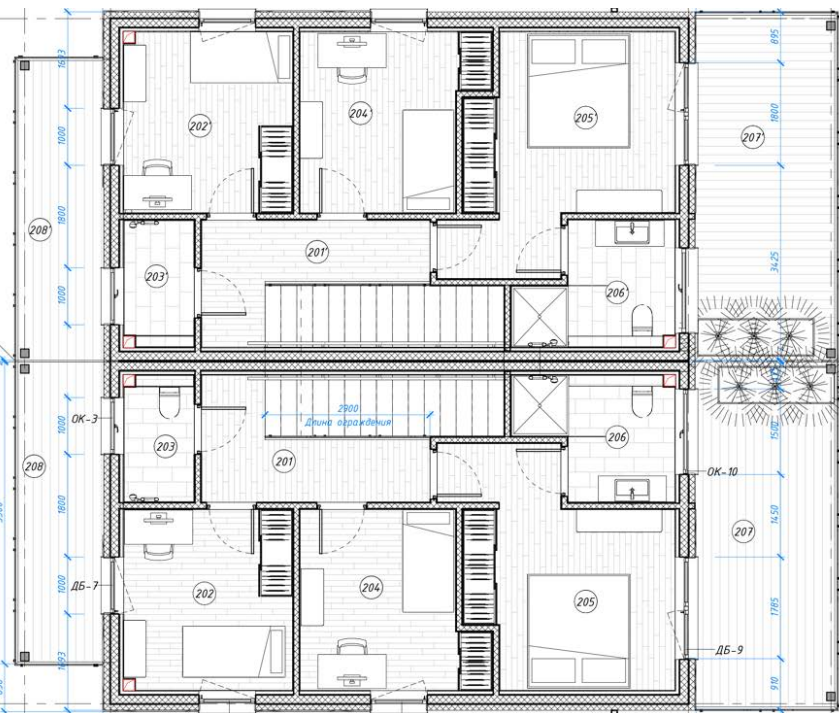
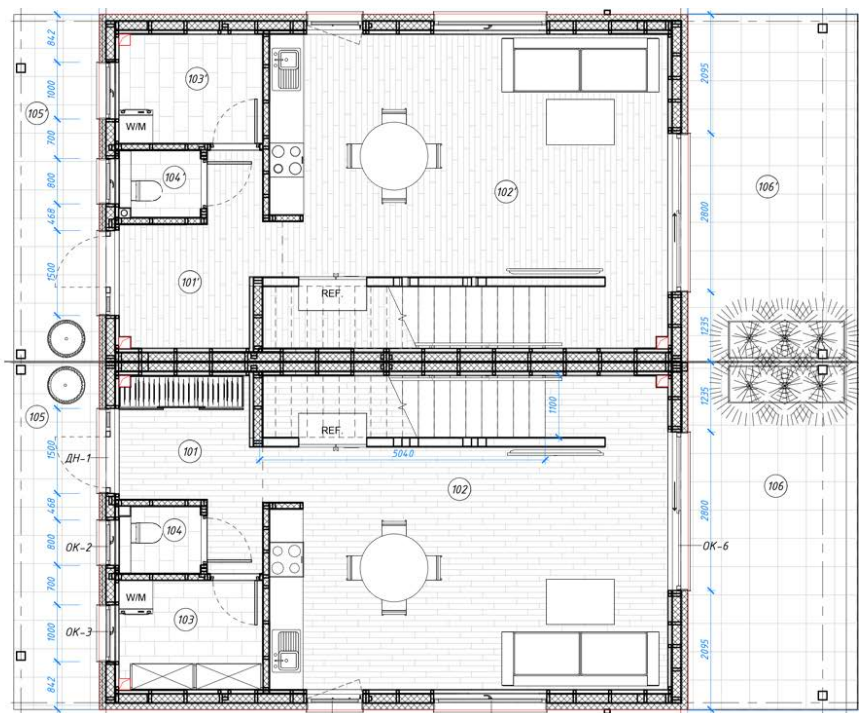
Two-story Duplex-1 is a two-apartment frame and panel house.

First floor-entrance hall, kitchen-living room, technical room, bathroom. On one side of the house – the main entrance with a porch on the other-access to the terrace. The first and second floors are connected by an internal staircase.

On the second floor there are 3 bedrooms and 2 bathrooms. On the opposite sides of the second floor there are exits to the balconies.











## HOUSE RANGE

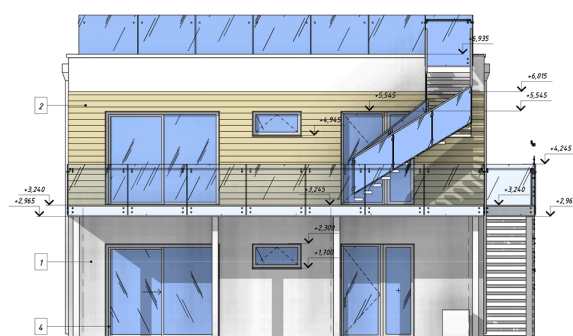
# DUPLEX 2

Duplex-2 is a two-story frame-panel house with two apartments.

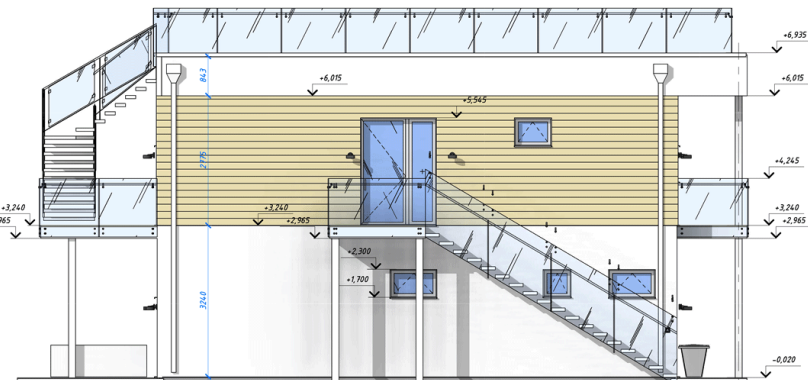
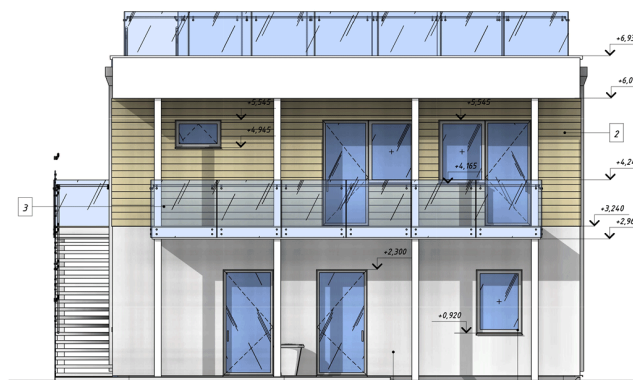
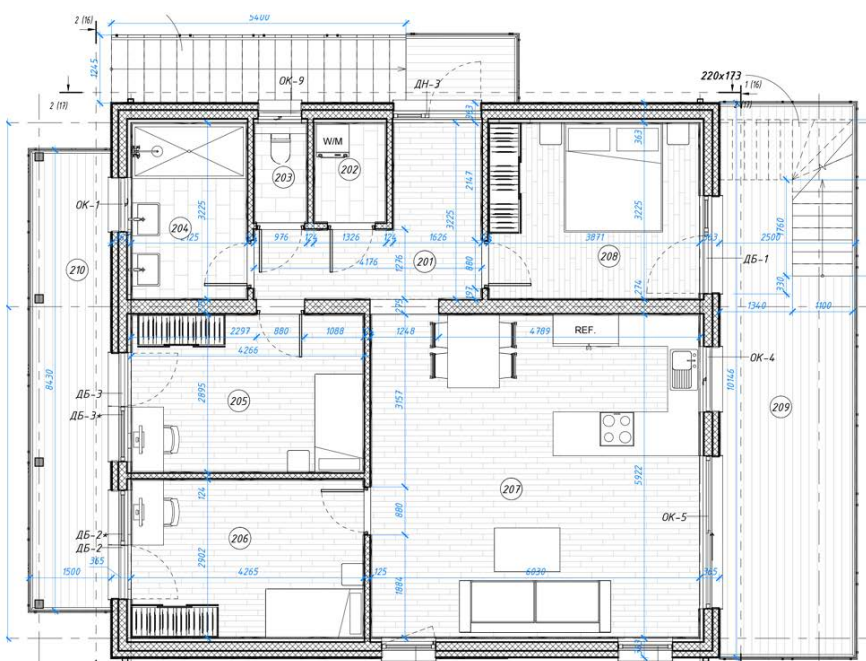
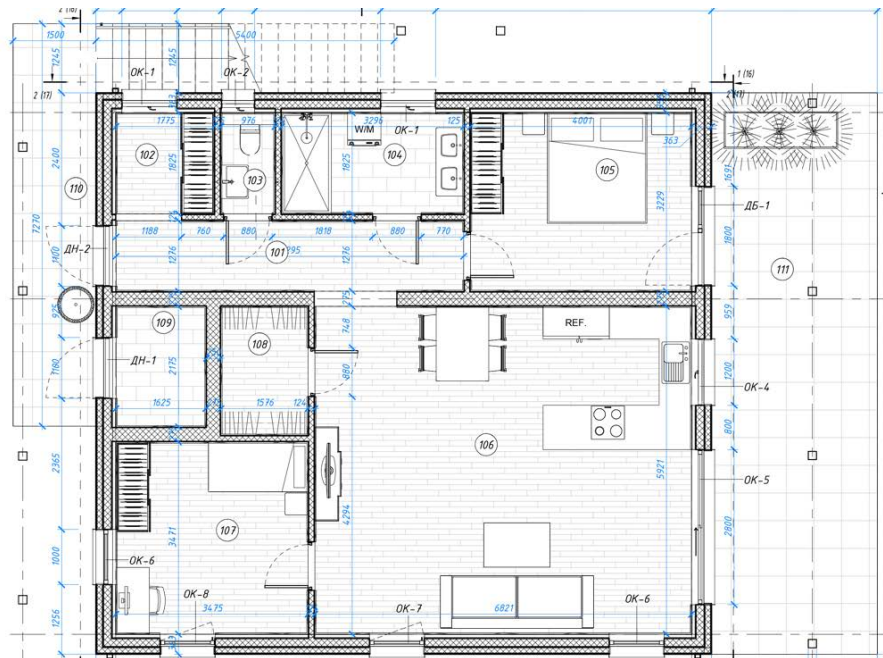
Apartment 1 on the first floor. There are three living rooms — a living room combined with a kitchen and two bedrooms. Other rooms — separate bathroom and toilet, dressing room, storage room, technical room, corridor. Outside there is a porch of the main entrance and a terrace on the opposite side.

Apartment 2 on the second floor. There are four living rooms — a living room combined with a kitchen, a large bedroom and two children's rooms. Two bathrooms and a separate toilet allow the household not to interfere with each other. The entrance to the second apartment is located outside the house: a side external staircase leads to it. A separate bonus of the second floor is the roof that is being used.

BUILDING AREA:	113.2 m <sup>2</sup>
USEFUL AREA FLOOR 1:	89.5 m <sup>2</sup>
USEFUL AREA FLOOR 2:	90.4 m <sup>2</sup>
DIMENSIONS (HxWxL):	7x10.15x11.15 m
CEILING HEIGHT:	2.72-2.7 m
ROOMS apart. 1/apart. 2:	3 / 4
VERANDA/PORCHES AREA apart. 1/apart. 2:	41.1 m <sup>2</sup> / 37.5+118.5 m <sup>2</sup>











HOUSE RANGE

# VITHAUS 190

Modern house with a winter garde in the art Nouveau style. Architecture by Joseph Eichler inspired us to create this project where the functional living space is harmoniously combined with natural environment.

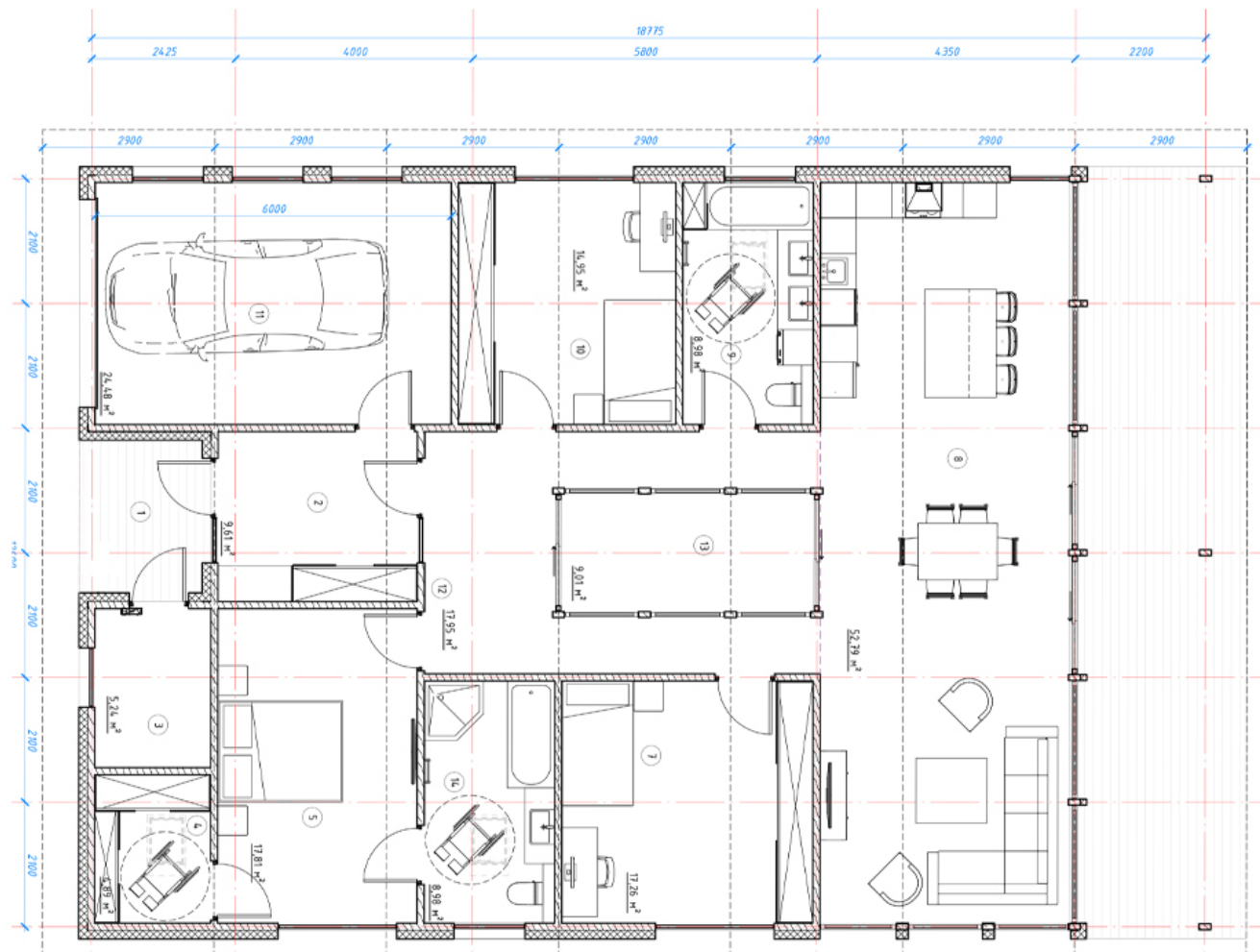
The house has three bedrooms: a master bedroom with own bathroom and two childrenas (guest) rooms. VITHAUS-190 should be located in a picturesque place to fully use the architectural feature - a glass wall with access to the terrace from the kitchen-living room. There are two other entrances/exits - the main one and the one through the 1-car garage.

Additional rooms: vestibule, boiler room, dressing room, corridor, guest bathroom. The winter garden is projected in the center of the house.

BUILDING AREA:	218.8 m <sup>2</sup>
USEFUL AREA:	191.9 m <sup>2</sup>
DIMENSIONS (HxWxL):	3.17x17.13x4.8 m
CEILING HEIGHT:	2.87-4.54 m
VERANDA AREA:	35.5 m <sup>2</sup>
WINTER GARDEN:	4.35x2.1 m <sup>2</sup>
ROOMS:	3











## HOUSE RANGE **BOLK**

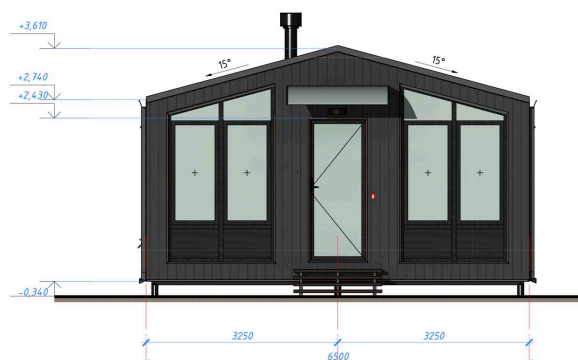
### Guest house/camping house.

Small house with two bedrooms, living room, dining room, kitchen, bathroom. The house is ideal for building a recreation center, camping, as an option for a guest house or a country house.

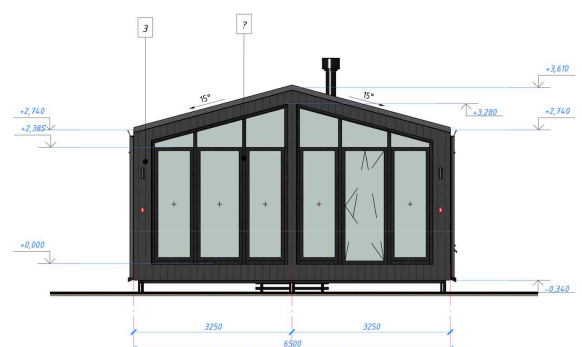
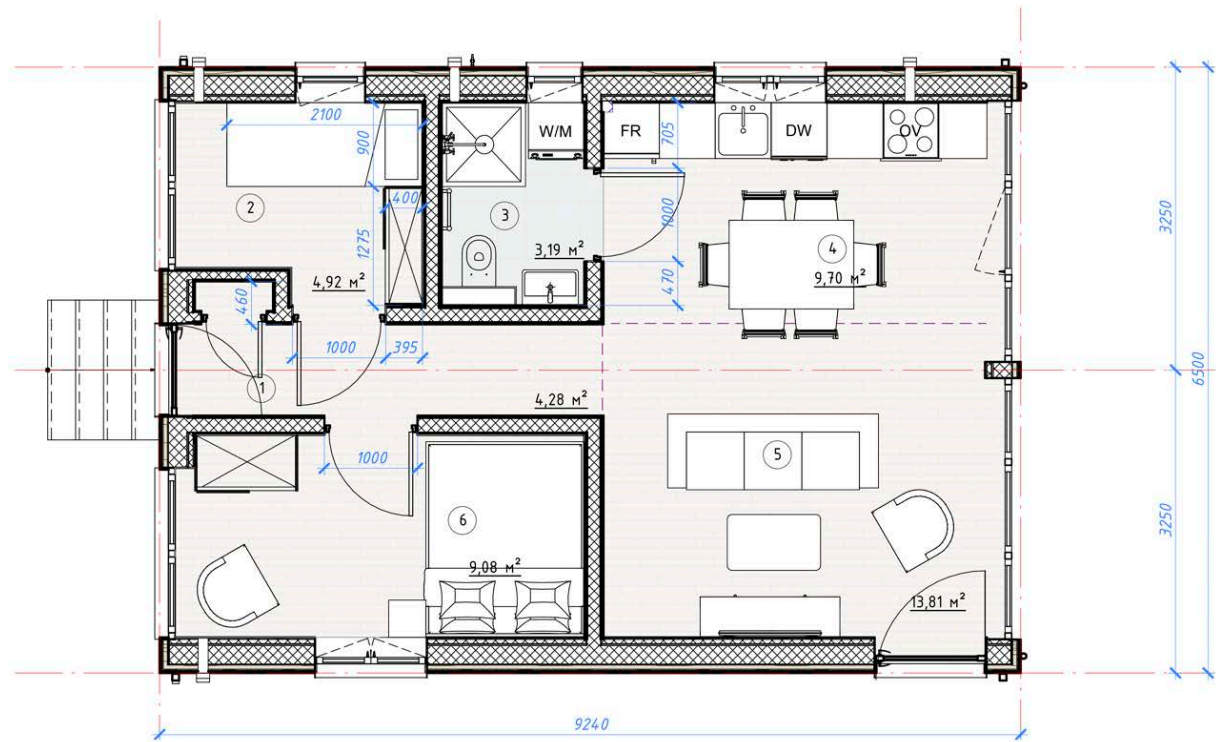
As a rule, most of the time on vacation we spend on the street and in order to spend time comfortably-a small place for sleeping and eating is enough.

The BOLK project is designed specifically to ensure that nothing marred the outdoor recreation.

BUILT-UP AREA:	60 m <sup>2</sup>
HOUSE DIMENSIONS (HxWxD):	3.6×6.5×9.24m
USEFUL AREA:	45 m <sup>2</sup>
VERANDA AREA:	0 m <sup>2</sup>
CEILING HEIGHT:	2.7 m











Calculate the cost of the house yourself using the KP

Calculator: [calc.vithaus.eu](http://calc.vithaus.eu)

Ask all the questions that interest you!



SIA VITHAUS

Legal address:

Riga, Matisa iela 61-28

Tel.: +371 29 898828

[office@vithaus.eu](mailto:office@vithaus.eu)

[vithaus.eu](http://vithaus.eu)